

Galanz

Galanz

MODEL: GLSM07RDR08
RETRO STAND MIXER USER MANUAL



Thank you for purchasing a Galanz product. Please read this manual carefully for correct usage and safety, and keep for future reference. For service, support and warranty information, call 1-800-562-0738.

CONTENTS

Important Safeguards	1
What's In The Box	3
Before First Use	4
Using Your Retro Stand Mixer	5
Mixing Tips	6
Care & Maintenance	7
Troubleshooting	8
Product Warranty	9
Warranty Registration	10

IMPORTANT SAFEGUARDS

When using electrical appliances, basic safety precautions should always be followed, including the following:

READ ALL INSTRUCTIONS BEFORE USING YOUR GALANZ PROFESSIONAL RETRO STAND MIXER

- The appliance is designed exclusively for private use. This appliance is not fit for commercial use. Do not use it outdoors (except if it is designed to be used outdoors). Keep it away from sources of heat, direct sunlight, humidity (never dip it into any liquid) and sharp edges. Do not use the appliance with wet hands. If the appliance is humid or wet, unplug it immediately.
- When cleaning or putting it away, make sure that the appliance is turned off, and unplugged (pull on the plug, not the cable) and remove the attached accessories.
- Do not operate the machine without supervision. If you should leave it unattended, always switch the machine off or remove the plug from the socket (pull the plug itself, not the lead).
- Check the appliance and the cable for damages on a regular basis. Do not use the appliance if it is damaged. Do not try to repair the appliance on your own. Always contact an authorized technician. If the supply cord is damaged, it must be replaced by the manufacturer, its service agent or similarly qualified persons in order to avoid a hazard.

- Use only original spare parts.
- Pay careful attention to the following "Special Safety Instructions".
- In order to ensure your children's safety, please keep all packaging (plastic bags, boxes, polystyrene etc.) out of their reach.
Caution! Do not allow small children to play with the packaging as there is a **danger of suffocation!**
- When using the blender and chopper, the appliance shall not be used by children. Keep the appliance and its cord out of reach of children.
- When using the beater and whisk, the appliance can be used by children aged from 8 years and above if they have been given supervision or instruction concerning use of the appliance in a safe way and if they understand the hazards involved. Cleaning and user maintenance shall not be made by children. Keep the appliance and its cord out of reach of children aged less than 8 years
- This device is not a toy. Children shall not play with the appliance.
- Appliances can be used by persons with reduced physical, sensory or mental capabilities or lack of experience and knowledge if they have been given supervision or instruction concerning use of the appliance in a safe way and if they understand the hazards involved.

Special Safety Instructions for this Machine

- Always unplug the appliance, before assembling, disassembling or cleaning.

IMPORTANT SAFEGUARDS

- Turn off and unplug the appliance before changing accessories or approaching parts that move in use. Do not use appliance for other than intended purpose.
- CAUTION: In order to avoid a hazard due to inadvertent resetting of the thermal cut-out, this appliance must not be supplied through an external switching device, such as a timer, or connected to a circuit that is regularly switched on and off by the utility.
- Only operate this machine under supervision.
- Do not interfere with any safety switches.
- Do not insert anything into the rotating hooks while the machine is working.
- Place the machine on a smooth, flat and stable working surface.
- Do not insert the plug of the machine into the power socket without having installed all the necessary accessories.
- CAUTION: Ensure that the blender is switched off before removing it from the stand.

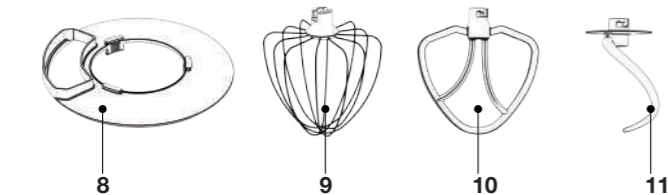
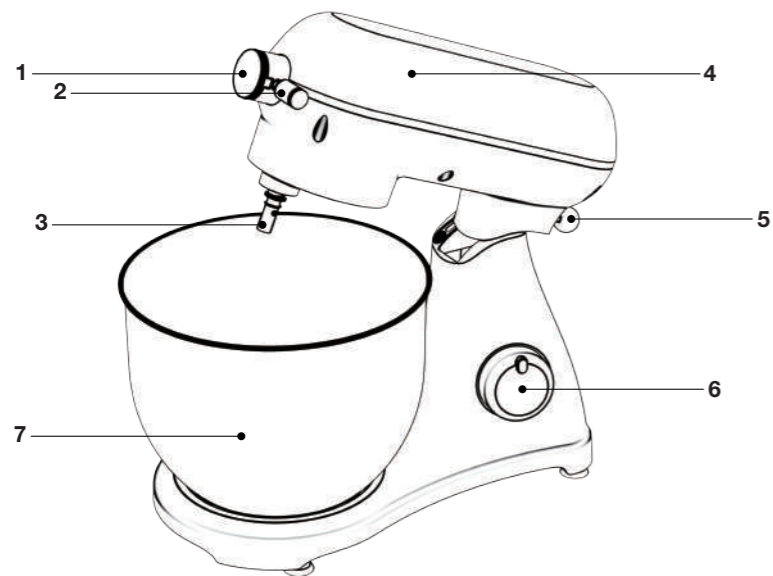
NOTICE

This appliance has a polarized plug (one blade is wider than the other). As a safety feature, this plug will fit in a polarized outlet only one way. If the plug does not fit fully in the outlet, reverse the plug. If it still does not fit, contact a qualified electrician. Do not attempt to modify this safety feature.

Power Consumption	120V, 60Hz
Watts	800 W
Capacity	7 Qt.

HOUSEHOLD USE ONLY
SAVE THESE INSTRUCTIONS

WHAT'S IN THE BOX



1. Attachment Hub
2. Attachment Knob
3. Beater Shaft
4. Motor Head
5. Tilt Head Handle
6. Speed Control Knob
7. 7 Qt. Stainless Steel Bowl
8. Splash Guard
9. Stainless Steel Whisk
10. Beater
11. Dough Hook

BEFORE FIRST USE

- 1. IMPORTANT:** Review all warnings in IMPORTANT SAFEGUARDS before first use.
- Carefully unpack your Retro Stand Mixer and remove all packaging materials. Check the contents to ensure all attachments have been received in good condition.
- Wipe the motor body and wash the accessories in the warm soapy water, or dishwasher.
- The carton should contain –
 - 1 x Motor Body
 - 1 x Beater
 - 1 x Dough Hook
 - 1 x Whisk
 - 1 x Bowl
 - 1 x User Manual
 - 1 x Quick Start Guide

Attaching/Removing the Accessories

- In order to lift the arm, Tilt Head Handle (2). The arm will now move upwards. (PG1)



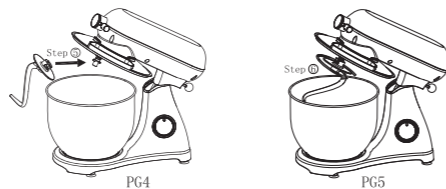
- Place the splash guard into its body. (PG2)



- Place the mixing bowl onto the stand (Step 1) and turn the bowl clockwise until it locks into place (Step 2). (PG3)



- Mount the required utensil (dough hook, beater, or whisk) by inserting the top into the output shaft, and turn anti-clockwise until it locks into place. (PG4&PG5)



- Now fill in your ingredients. Do not overfill the machine - the maximum quantity of ingredients is 2.8 Liters.

- Lower the arm using the Tilt Head Handle (2). (PG6)



- Insert the plug into a properly installed power socket.

- Switch the machine using the speed control knob to a speed between 1 and 6 (corresponding to the mixture).

- For pulse operation (kneading at short intervals), turn the switch to the "PULSE" position. The switch has to be held in this position according to the desired interval length. When the switch is released it returns automatically to the "0" position.

- After kneading/stirring, turn the speed control knob (3) back to the "0" position as soon as the mixture has formed a ball.

- Lift up the Tilt Head Handle and the arm will be raised.

- The mixture can now be released with the help of a spatula and removed from the mixing bowl.

- The mixing bowl can now be removed.

- Clean the parts as described under "Cleaning" .

Adjusting the Levels and Using the Accessories

Use	Picture	Levels	Time(Min)	Maximum	operating steps
Dough hook		1-3	3-5	1000g flour and 538g water	1 speed run for 30s, the 2 speed run for 30s, and then the 3 speed run for 2 min to 4 min to form a cluster. After continuous operation of 10 min, please stop using.
Beater		2-4	3-10	660g flour and 840g water	2 speed run for 20s, 4 speed run for no more that 2 min 40s.
Whisk		6	3-10	3 egg whites (Minimum)	Allow 5 or 6 speed to run for more than 3 min.

Cleaning

- Before cleaning remove the plug from the socket.
- Never immerse the motor in water.
- Do not use any sharp or abrasive detergents.

Motor Housing

- Only a damp rinsing cloth should be used to clean the outside of the housing.

Mixing Bowl, Mixing Equipment

CAUTION:

- The components are not suitable for cleaning in a dishwasher. If exposed to heat or caustic cleaners they might become misshapen or discolored.
- Components that have come into contact with food can be cleaned in soapy water.
- Allow the parts to dry thoroughly before reassembling the device.

Disposal



Do not dispose of the device in normal domestic waste.

- Dispose of the device over a registered waste disposal firm or through your communal waste disposal facility. Observe the currently valid regulations. In case of doubt, consult your waste disposal facility.

NO.	Troubles	Solution
1	The machine doesn't work	Check if the plug is in good contact with the socket. Check if the rise button spring back in place. Check if the machine works continuously more than 6 minutes, and wait until the motor cools down.
2	Noise in the mixing bowl when working (the accessory scraped the bowl)	Check if the mixing bowl is properly installed. Check if the accessory is installed properly on the machine.
3	The pot cover doesn't fit the mixing bowl properly	Check if the splash guard placed on the machine properly. Check if the mixing bowl is installed properly on the machine and locked correctly.
4	The machine doesn't work on certain speeds	Check if the mark on the speed knob corresponds to the speed setting on the housing. Rotate the speed knob to 0, and re-check if the machine works.
5	Movements when the machine working	·Check if the anti-slip feet fell off. ·Check if the machine is placed on a smooth and flat tabletop.
6	The rise button won't spring back in place after installing the mixing bowl and pot cover	·Check if the splash guard is placed on the machine properly. ·Check if the mixing bowl is properly installed.

PRODUCT WARRANTY

This warranty applies to products sold by Galanz Americas in the U.S. This warranty is in lieu of any other warranty and expressly applies to the individual product only.

Galanz product is warranted for one year following purchase for defects in material and workmanship. **Please save your receipt as proof of purchase is required to make a warranty claim.** During this warranty period, we will provide the replacement cost of this product, a replacement or the equivalent, or repair per our discretion.

The warranty cannot be transferred through resale, including the resale through a 3rd party unauthorized retailer and is only bestowed upon the original consumer purchaser upon purchase from an authorized retailer.

■ **This warranty does not cover and excludes damage or defects caused by:**

- Consumer misuse
- Abuse
- Neglect including the failure to clean and/or provide adequate regular maintenance as outlined in the user manual
- Commercial use
- Subjecting the product to any voltage outside the specified range
 - Loss of parts
- The affixing of any attachments not provided with the product
- Accident, or
- Use in a manner not intended and outlined in the user manual.
- Any subsequent damages caused by the above listed exclusions will not be covered and any claims determined to meet the

- above exclusions will be denied. All liability is limited to the purchase price and does not include any:
- Retail offered extended warranties
 - Tax
 - Other charges(including postage to send required materials)
 - Incidental and/or consequential damages associated with the product in question.

Every implied warranty, including any statutory warranty of merchantability or fitness for a particular purpose is disclaimed except to the extent prohibited by law, in which case such warranty is limited to the duration of this written warranty. This warranty gives you specific legal rights. You may have other legal rights that vary depending on where you live. Some states do not allow limitations on implied warranties or special, incidental, or consequential damaged, so the above limitations may not apply to you.

If you have a claim under this warranty, please call our Customer Service number: 1-800-562-0738.

For faster service, please have the model number, serial number, and receipt ready for the operator to assist you.

WARRANTY REGISTRATION

Please mail this warranty card to address below within 30 days of purchase. Or you can register your product on line by going to **www.galanz.com\us**.

Galanz Americas, 55 Challenger Road, Suite 503, Ridgefield Park, NJ 07660.

PLEASE PRINT CLEARLY.

Name _____

Address _____

City _____ State _____ Postal Code _____

Phone _____ Email _____

Model Number _____ Serial Number _____

Purchase Location _____

You must attach a copy of your purchase receipt to validate your registration.