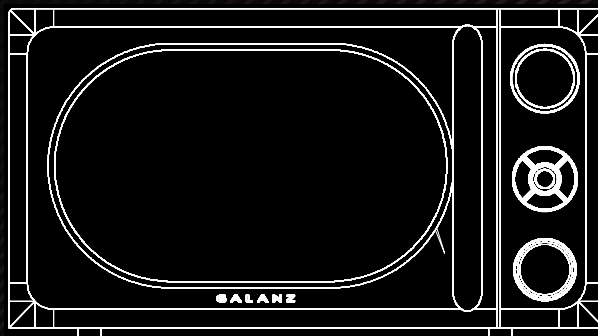


Galanz

Model# GLCMKA07BKR-07
GLCMKA07RDR-07
GLCMKA07GNR-07
GLCMKA07BER-07
GLCMKA07WER-07

Retro Microwave Oven User Manual



Thank you for purchasing a Galanz product. Please read this manual carefully for correct usage and safety, and keep for future reference. For service, support and warranty information, call 800-562-0738.

©2021Galanz Americas Limited Company.

CONTENTS

Important Safety Instructions	1
Precautions to Avoid Possible Exposure to Excessive Microwave Energy	1
CALIFORNIA PROPOSITION 65 WARNING	1
Warning	1
Grounding Instructions	3
Installation Guide	4
Cooking Utensils Guide	5
Specifications and Product Diagram	6
Control Panel	7
Operation Instructions	8
Setting the Clock	8
Express Cooking	9
Microwave Cooking	10
Time Defrost	11
Weight Defrost	12
Multi-stage Cooking	13
Timer	14
Child Lock	15
Setting Eco Function	16
Auto Cook Menus	17
Cleaning And Care	23
Product Warranty	24
Warranty Registration	25

IMPORTANT SAFETY INSTRUCTIONS

PRECAUTIONS TO AVOID POSSIBLE EXPOSURE TO EXCESSIVE MICROWAVE ENERGY

- Do not attempt to operate this oven with the door open since open-door operation can result in harmful exposure to microwave energy. It is important not to defeat or tamper with the safety interlocks.
- Do not place any object between the oven front face and the door or allow soil or cleaner residue to accumulate on sealing surfaces.
- Do not operate the oven if it is damaged. It is very important that the oven door close properly and that there is no damage to the
 - a) Door (including any dents),
 - b) Hinges and latches (broken or loosened),
 - c) Door seals and sealing surfaces.The oven should not be adjusted or repaired by anyone except qualified service personnel.

GALIFORNIA PROPOSITION 65 WARNING

WARNING

Cancer and Reproductive Harm-WWW.P65Warnings.ca.gov.

WARNING

To reduce the risk of burns, electric shock, fire, injury to persons or exposure to excessive microwave energy:

- Read all instructions before using the appliance.
- Read and follow the specific "PRECAUTIONS TO AVOID POSSIBLE EXPOSURE TO EXCESSIVE MICROWAVE ENERGY" on page 1.
- This appliance must be grounded. Connect only to properly grounded outlet. See "GROUNDING INSTRUCTIONS " on page 3.
- Do not operate the oven when empty.
Install or locate this appliance only in accordance with the provided installation instructions.
- Some products such as whole eggs and sealed containers -for example, closed glass jars- are able to explode and should not be heated in this oven.
- Use this appliance only for its intended use as described in this manual. Do not use corrosive chemicals or vapors in this appliance. This type of oven is specifically designed to heat, cook, or dry food. It is not designed for industrial or laboratory use.
- As with any appliance, close supervision is necessary when used by children.
- To reduce the risk of fire in the oven cavity:
 - Do not overcook food. Carefully attend appliance when paper, plastic, or other combustible materials are placed inside the oven to facilitate cooking.
Remove wire twist-ties from paper or plastic bags before placing bag in oven.
 - If materials inside the oven should ignite, keep oven door closed, turn oven off, and disconnect the power cord or shut off power at

SAVE THESE INSTRUCTIONS

IMPORTANT SAFETY INSTRUCTIONS

the fuse or circuit breaker panel.

- Do not use the cavity for storage purposes. Do not leave paper products, cooking utensils or food in the cavity when not in use.
- Liquids, such as water, coffee, or tea are able to be overheated beyond the boiling point without appearing to be boiling due to surface tension of the liquid. Visible bubbling or boiling when the container is removed from the microwave oven is not always present. **THIS COULD RESULT IN VERY HOT LIQUIDS SUDDENLY BOILING OVER WHEN A SPOON OR OTHER UTENSIL IS INSERTED INTO THE LIQUID.** To reduce the risk of injury to person:
 - Do not overheat the liquid.
 - Stir the liquid both before and halfway through heating it.
 - Do not use straight-sided containers with narrow necks.
 - After heating, allow the container to stand in the microwave oven for a short time before removing the container.
 - Use extreme care when inserting a spoon or other utensil into the container.
- Do not heat oil or fat for deep-frying. It is difficult to control the temperature of oil in microwave oven.
- Do not cover or block any openings on the appliance.
- Do not operate this appliance if it has a damaged cord or a plug, if it is not working properly or if it has been damaged or dropped.
- Do not immerse cord or plug in water. Keep cord away from heated surface. Do not let cord hang over edge of table or counter.
- This appliance should be serviced only by qualified service personnel, contact nearest authorized service facility for examination, repair, or adjustment.
- When cleaning surfaces of door and oven that comes together on closing the door, use only mild, nonabrasive soaps, or detergents applied with a sponge or soft cloth.

- Oversized food or oversized metal utensils should not be inserted in a microwave/toaster oven as they may create a fire or risk of electric shock.
- Do not store or use this appliance outdoors. Do not use this product near water, for example, near a kitchen sink, in a wet basement, near a swimming pool, or similar locations.
- Do not clean with metal scouring pads. Pieces can burn off the pad and touch electrical parts involving a risk of electric shock.
- Do not store any materials, other than manufacturer's recommended accessories, in this oven when not in use.
- Do not cover racks or any other part of the oven with metal foil. This will cause overheating of the oven.
- This equipment has been tested and found to comply with Part 18 of the FCC Rules. Operation is subject to the following two conditions: (1) This device may not cause harmful interference, and (2) this device must accept any interference received, including interference that may cause undesired operation.

CAUTION: Changes or modifications not expressly approved by the party responsible for compliance could void the user's authority to operate the product.

This equipment generates, uses and can radiate radio frequency energy and, if not installed and used in accordance with the instructions, may cause harmful interference to radio communications. There is no guarantee that interference will not occur in a particular installation. If this equipment does cause harmful interference to radio or television reception, which can be determined by turning the equipment off and on, the user is encouraged to try to

SAVE THESE INSTRUCTIONS

IMPORTANT SAFETY INSTRUCTIONS

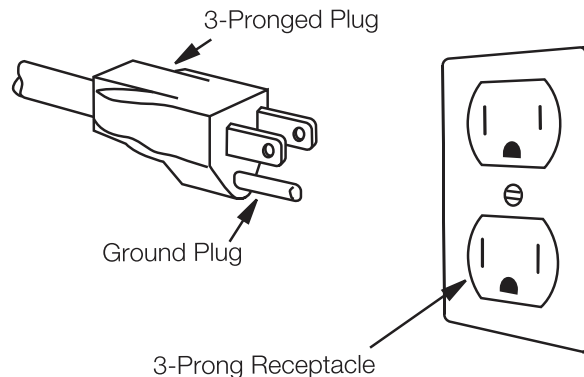
correct the interference by one or more of the following measures:

- Reorient or relocate the receiving antenna.
- Increase the separation between the equipment and receiver.
- Connect the equipment into an outlet on a circuit different from that to which the receiver is connected.
- Consult the dealer or an experienced radio/TV technician for help.

GROUNDING INSTRUCTIONS

This appliance must be grounded. In the event of an electrical short circuit, grounding reduces risk of electric shock by providing an escape wire for the electric current. This appliance is equipped with a cord having a grounding wire with a grounding plug. The plug must be plugged into an outlet that is properly installed and grounded.

Consult a qualified electrician or serviceman if the grounding instructions are not completely understood, or if doubt exists as to whether the appliance is properly grounded, and if it is necessary to use an extension cord, use only a 3-wire extension cord that has a 3-blade grounding plug and a 3-slot receptacle that will accept the plug on the appliance. The marked rating of the extension cord shall be equal to or greater than the electrical rating of the appliance.



SAVE THESE INSTRUCTIONS

IMPORTANT SAFETY INSTRUCTIONS

Electrical Requirements

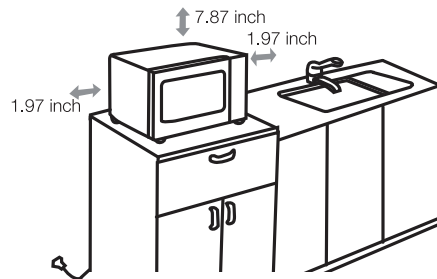
The electrical requirements are a 120 volt 60 Hz, AC only, 15 amp. It is recommended that a separate circuit serving only the oven be provided. The oven is equipped with a 3-prong grounding plug. It must be plugged into a wall outlet properly installed and ground.

Power Cord

- A short power supply cord is provided to reduce the risks resulting from becoming entangled in or tripping over a longer cord.
- Longer cord sets or extension cords are available and may be used if care is exercised in their use.
- If long cord or extension cord is used:
 - a) The marked electrical rating of the cord set or extension cord should be at least as great as the electrical rating of the appliance.
 - b) The extension cord must be a grounding-type 3-wire cord, and the longer cord should be arranged so that it will not drape over the counter top or table top where it can be pulled on by children or tripped over accidentally.

INSTALLATION GUIDE

- Make sure that all the packing materials are removed from the inside of the door.
- This microwave oven must be placed on a flat, stable surface.
- For correct operation, the oven must have sufficient airflow. Allow minimum 7.87 inch of free space necessary above the top surface of the oven and 1.97 inch at both sides. Do not cover or block any openings on the appliance. Do not remove feet.
- The appliance shall be only used on a countertop over 3 feet (914mm) above the floor.
- Do not place the oven where heat, moisture, or high humidity are generated, or near combustible materials.



- Make sure that the power cord is undamaged and does not run under the oven or over any hot or sharp surface.
- The socket must be readily accessible so the microwave oven can be easily unplugged in an emergency.

SAVE THESE INSTRUCTIONS

IMPORTANT SAFETY INSTRUCTIONS

COOKING UTENSILS GUIDE



This section lists which utensils can be used in this microwave, which have limited use for short periods, and which should not be used in this microwave.

RECOMMENDED ✓

Microwave browning dish — Use to brown the exterior of small items such as steaks, chops, or pancakes. Follow the directions provided with your browning dish.

Microwaveable plastic wrap — Use to retain steam. Leave a small opening for some steam to escape and avoid placing it directly on the food.

Paper towels and napkins — Use for short-term heating and covering; these absorb excess moisture and prevent spattering. Do not use recycled paper towels, which may contain metal and could ignite.

Glass and glass-ceramic bowls and dishes — Use for heating or cooking.

Paper plates and cups — Use for short-term heating at low temperatures. Do not use recycled paper, which contain metal and could ignite.

Wax paper — Use as a cover to prevent spattering.

Thermometers — Use only those labeled "Microwave Safe" and follow all directions.

Check the food in several places. Conventional thermometers may be used on microwave food once the food has been removed from the oven.

LIMITED USE ✗

Aluminum foil — Use narrow strips of foil to prevent overcooking of exposed areas.

Using too much foil can damage your oven, so be careful. You should keep distance of 1 inch (2.54cm) between aluminum foil and cavity.

Ceramic, porcelain, and stoneware — Use these if they are labeled "Microwave Safe". If they are not labeled, test them to make sure they can be used safely.

Plastic — Use only if labeled "Microwave Safe". Other plastics can melt.

NOT RECOMMENDED ⊘

Glass jars and bottles — Regular glass is too thin to be used in a microwave. It can shatter and cause damage and injury.

Paper bags — These are a fire hazard, except for popcorn bags bagsesidue on food.

Styrofoam plates and cups — These can melt and leave an unhealthy residue on food.

Plastic storage and food containers — Containers such as margarine tubs can melt in the microwave.

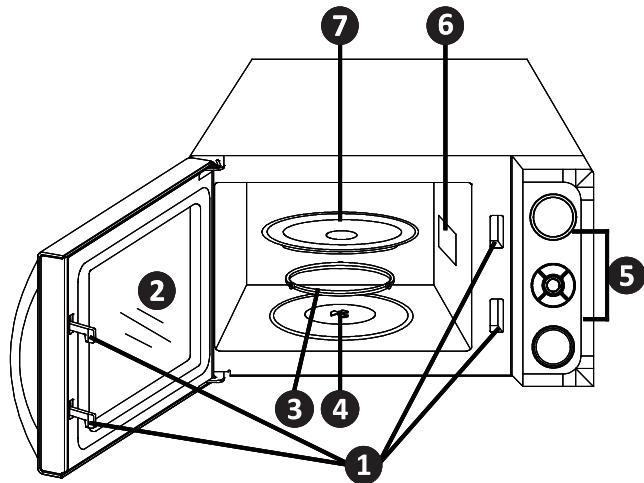
Metal utensils — These can damage your oven. Remove all metal before cooking.

Note:

Should you wish to check if a dish is safe for microwaving, place the empty dish in the oven and microwave on HIGH for 30 seconds. A dish which becomes very hot should not be used.

SAVE THESE INSTRUCTIONS

PRODUCT DIAGRAM

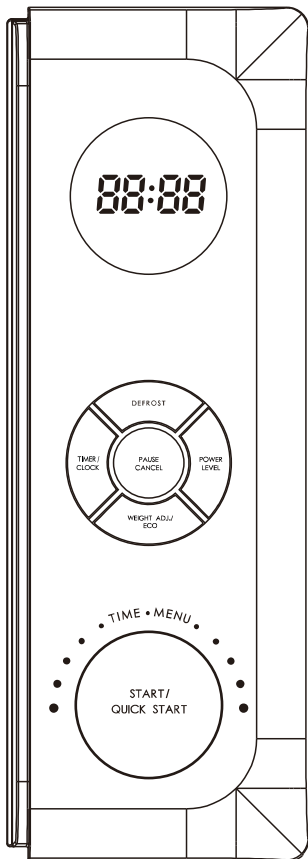


- ❶ Door Safety Lock System
- ❷ Oven Window
- ❸ Roller Ring
- ❹ Shaft
- ❺ Control Panel
- ❻ Wave Guide (Please do not remove the mica plate covering the wave guide)
- ❼ Glass Tray

Product Specifications:

Power supply	120V/60Hz
Power Consumption (Microwave)	1100W
Rated Microwave Power Output	700W
Operating Frequency	2450MHz
Outside Dimensions(H x W x D)	10 5/16 X 17 13/16 X 13 3/4 inches
Oven Capacity	0.7 Cu.Ft.
Net Weight	Approx. 23.1lbs

CONTROL PANEL



■ DISPLAY

Cooking time, power, indicators and clock time are displayed.

■ POWER LEVEL

Use to set power level. To check power level during time cooking, press POWER LEVEL button.

■ DEFROST

Press the button twice to set weight defrost program. The defrosting time and power level are automatically set once the food weight is programmed. Press the button once to set defrost program based on time enter.

■ TIME/MENU(knob)

Turn the knob to input popular food menu, clock time, cooking time.

■ PAUSE CANCEL

Press to clear the selected power level, cook or defrost times that were previously programmed. Press to set child lock.

■ START/QUICK START(the knob)

Press to start the cooking or defrosting programs. Press to set quick start program.

■ TIMER/CLOCK

Press to set clock or timer program.

■ WEIGHT ADJ./ECO

Press to set food weight or amount and set eco function.

OPERATION INSTRUCTIONS

- When the power is supplied, beep will sound and the display will show "1:00".
- In the process of setting, the oven will return to standby mode after 20 seconds without any operation.
- During cooking, if press **PAUSE CANCEL** once or open the door, the program will be paused, then press the dial to resume, but if press **PAUSE CANCEL** twice, the program will be canceled.
- When the cooking completes, the screen will display "End" with sound every two minutes until user press any button or open the door.

Setting the Clock



This is a 12-hour or 24-hour clock. You can choose to set the clock time in 12-hour or 24-hour cycle by pressing **TIMER/CLOCK** in standby mode.

Example: Set a 12-hour clock at 11:58.

- 1** In standby mode, press and hold **TIMER/CLOCK** for three seconds to select 12-hour clock, press the button again to select 24-hour clock.

TIMER /
CLOCK



- 2** Turn the dial until the correct hour is displayed.



- 3** Press **TIMER/CLOCK** to confirm the hour.

TIMER /
CLOCK



- 4** Turn the dial until the correct minute is displayed.



OPERATION INSTRUCTIONS

5 Press **TIMER/CLOCK** to confirm the minute and finish setting.

TIMER /
CLOCK



Express cooking



This feature allows you to start the oven quickly at maximum microwave power.

First way: Set the cooking time by pressing the dial.

Example: Set the cooking time for 3 minutes.

1 In standby mode, press the dial 6 times to enter the time.(each press for 30 seconds)



2 The oven starts working automatically at full power.






NOTE: The longest express cooking time is 10 minutes.

OPERATION INSTRUCTIONS

Second way: Set the cooking time by turning the dial.

Example: Set the cooking time for 3 minutes.

1 In standby mode, turn the dial clockwise to enter time	 The control panel shows a digital display with '03:00' and a '%' symbol. Above the display are icons for 'AUTO', Wi-Fi, a list, a clock, and a lock. Below the display are icons for 'LB', 'OZ', and three cooking modes (popcorn, bowl, pan).
 A circular dial with two curved arrows indicating clockwise rotation.	

2 Press the dial and the oven starts working automatically at full power.	 The control panel shows a digital display with '03:00' and a '%' symbol. Above the display are icons for 'AUTO', Wi-Fi, a list, a clock, and a lock. Below the display are icons for 'LB', 'OZ', and three cooking modes (popcorn, bowl, pan).



NOTE: The longest cooking time is 30 minutes.



Microwave cooking



This feature allows you to choose the power level and cooking time of microwave function. The longest cooking time is 95 minutes.

Example: Cook at 60% power level for 3 minutes and 50 seconds.

1 Press POWER LEVEL button thrice to select the 60% power level.	 The control panel shows a digital display with '03:50' and a '%' symbol. Above the display are icons for 'AUTO', Wi-Fi, a list, a clock, and a lock. Below the display are icons for 'LB', 'OZ', and three cooking modes (popcorn, bowl, pan).
 A rectangular button labeled 'POWER LEVEL' with 'x 3' to its right.	

2 Turn the dial clockwise to enter the time. The longest time is 95 minutes.	 The control panel shows a digital display with '03:50' and a '%' symbol. Above the display are icons for 'AUTO', Wi-Fi, a list, a clock, and a lock. Below the display are icons for 'LB', 'OZ', and three cooking modes (popcorn, bowl, pan).
 A circular dial with two curved arrows indicating clockwise rotation.	

OPERATION INSTRUCTIONS

3 Press the dial to confirm and start cooking.



Power Level Chart:

Power Level	Display	Power Level	Display
100%	100%	40%	40%
80%	80%	20%	20%
60%	60%	0%	00%

Time defrost



The defrosting power is adjusted automatically once the cooking time is programmed.

Example: Defrost food for 3 minutes and 50 seconds.

1 In standby mode, press the **DEFROST** once.

DEFROST



2 Turn the dial to select the defrosting time.



3 Press the dial to confirm and start cooking.



NOTE:

During defrosting program, the system will pause and sound beeps to remind user to turn food over, and then press the dial to resume the defrosting.

OPERATION INSTRUCTIONS

Weight defrost



The defrosting time and power level are automatically set once the food weight is selected. The weight ranges from 4oz to 64oz.

Example: Defrost 8oz fish.

1 In standby mode, press the **DEFROST** twice.

DEFROST x 2



2 Press **WEIGHT ADJ./ECO** repeatedly to select the food weight.

WEIGHT ADJ./
ECO



3 Press the dial to confirm and start cooking.



NOTE:

- During defrosting program, the system will pause and sound beeps to remind user to turn food over, and then press the dial to resume the defrosting.
- Weight must be in pounds and ounces. If label gives weight in pounds only, change the fraction of a pound to ounces using the following chart.

Converting fractions of a pound to ounces:

Fractions of a pound	Ounces	Fractions of a pound	Ounces
Less than .03	0	.54 to .59	9
.03 to .09	1	.60 to .65	10
.10 to .15	2	.66 to .71	11
.16 to .21	3	.72 to .78	12
.22 to .27	4	.79 to .84	13
.28 to .34	5	.85 to .90	14
.35 to .40	6	.91 to .97	15
.41 to .46	7	above .97	go to next even
.47 to .53	8		

OPERATION INSTRUCTIONS

MULTI-STAGE COOKING



Your oven can be programmed for up to 3 automatic cooking sequences.

Example: Cook food with 3 sequences of microwave cooking program.

1 Press **POWER LEVEL** button thrice to select the 60% power level.

POWER LEVEL x3

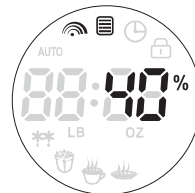


2 Turn the dial clockwise to enter the time. The longest time is 95 minutes.



3 Press **POWER LEVEL** button 4 times to select the 40% power level.

POWER LEVEL x4

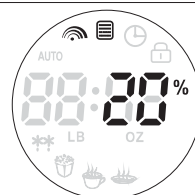


4 Turn the dial clockwise to enter the time. The longest time is 95 minutes.



5 Press **POWER LEVEL** button 5 times to select the 20% power level.

POWER LEVEL x5



OPERATION INSTRUCTIONS

6 Turn the dial clockwise to enter the time. The longest time is 95 minutes.



7 Press the dial to confirm and start cooking.



NOTE: Express cooking, speed defrost, weight defrost and auto cook menus can't be set in multi-stage cooking.

Timer



You can use the timer feature to count down a specific amount of time whether it's for cooking or for anything else.

Example: How to set the timer for 3 minutes and 50 seconds.

1 In standby mode, press **TIMER/CLOCK** once.

TIMER /
CLOCK



2 Turn the dial to enter the time. The maximum time you can set is 95 minutes.



3 Press the dial or **TIMER/CLOCK** to confirm.



or

TIMER /
CLOCK



OPERATION INSTRUCTIONS

Child lock



The child proof lock prevents unsupervised operation by little children.

Example1: Set the child lock.

1 In standby mode, suppose the displayer is showing 11:00.



2 Press and hold the **PAUSE CANCEL** for 3 seconds, a beep sounds and lock indicator lights.

PAUSE
CANCEL



Example 2: To cancel the child lock.

1 In standby mode, suppose the displayer is showing 11:00.



2 Press and hold the **PAUSE CANCEL** for 3 seconds, a beep sounds and lock indicator turns off.

PAUSE
CANCEL



OPERATION INSTRUCTIONS

Setting eco function



The ECO function makes oven to enter the power saving mode and save electricity.

Example1: To set the eco function.

1 In standby mode, suppose the displayer is showing 11:00.



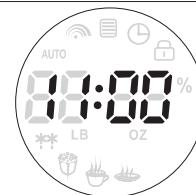
2 Press **WEIGHT ADJ./ECO** once.
The display turns off.

WEIGHT ADJ./
ECO



Example 2: To cancel the eco function.

3 In eco mode, press any button, the function can be canceled and the display turns on.



OPERATION INSTRUCTIONS

Auto cook menus



For the following foods, you do not need to input cooking power and time. It is sufficient to indicate the type of food that you want to cook as well as the weight or servings of this food.

Example1: Cook beverage for 2 cups (7oz/serving).

1 In standby mode, suppose the displayer is showing 11:00.

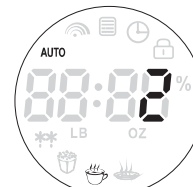


2 Turn the dial anti-clockwise.



3 Press the **WEIGHT ADJ./ECO** twice.

WEIGHT ADJ./
ECO x 2



4 Press the dial to confirm and start cooking.



Beverage Chart:

Code	Food	Serving (7oz/serving)	Cooking Time
A-1	Beverage	1	1:40
		2	3:00
		3	4:20

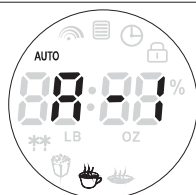
OPERATION INSTRUCTIONS

Example2: Cook potato for 2 servings (8oz/servins).

1 In standby mode, suppose the displayer is showing 11:00.



2 Turn the dial anti-clockwise.

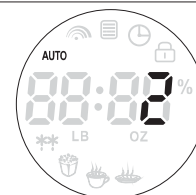


3 Turn the dial clockwise until the display shows "A-2".



4 Press the **WEIGHT ADJ./ECO** twice.

WEIGHT ADJ./
ECO x 2



5 Press the dial to confirm and start cooking.



Potato Chart:

Code	Food	Serving (8oz/serving)	Cooking Time
A-2	Potato	1	6:00
		2	9:00
		3	13:00

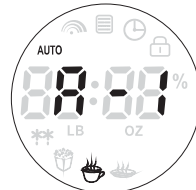
OPERATION INSTRUCTIONS

Example3: Reheat food for 25oz(1LB.9oz).

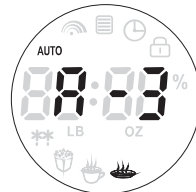
1 In standby mode, suppose the displayer is showing 11:00.



2 Turn the dial anti-clockwise.

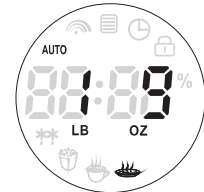


3 Turn the dial clockwise until the display shows "A-3".



4 Press the **WEIGHT ADJ./ECO** 6 times.

WEIGHT ADJ./
ECO x 6



5 Press the dial to confirm and start cooking.



Reheat Food Chart:

Code	Food Weight	Cooking Time
A-3	7oz	2:00
	11oz	2:40
	14oz	3:20
	18oz(1LB.2oz)	4:00
	21oz(1LB.5oz)	4:40
	25oz(1LB.9oz)	5:20
	28oz(1LB.12oz)	6:00

OPERATION INSTRUCTIONS

Example4: Cook Frozen Dinner for 18oz(1LB.2oz).

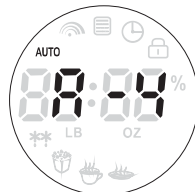
1 In standby mode, suppose the displayer is showing 11:00.



2 Turn the dial anti-clockwise.

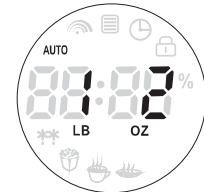


3 Turn the dial clockwise until the display shows "A-4".



4 Press the **WEIGHT ADJ./ECO** twice.

**WEIGHT ADJ./
ECO** x 2



5 Press the dial to confirm and start cooking.



Cook Frozen Dinner Chart:

Code	Food Weight	Cooking Time
A-4	9oz	7:00
	18oz(1LB.2oz)	11:00

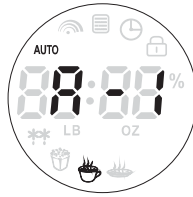
OPERATION INSTRUCTIONS

Example5: Cook Popcorn(3.5oz).

1 In standby mode, suppose the displayer is showing 11:00.



2 Turn the dial anti-clockwise.

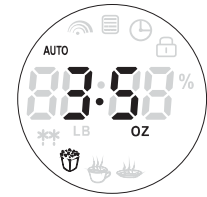


3 Turn the dial clockwise until the display shows "A-5".



4 Press the **WEIGHT ADJ./ECO** once.
(Only one kind of weight)

WEIGHT ADJ./
ECO



5 Press the dial to confirm and start cooking.



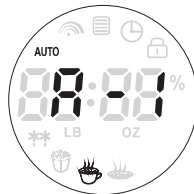
OPERATION INSTRUCTIONS

Example6: Cook Pizza for 11oz.

1 In standby mode, suppose the displayer is showing 11:00.



2 Turn the dial anti-clockwise.

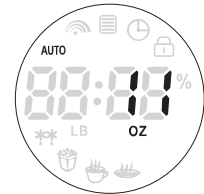


3 Turn the dial clockwise until the display shows "A-6".



4 Press the **WEIGHT ADJ./ECO** twice.

WEIGHT ADJ./
ECO x 2



5 Press the dial to confirm and start cooking.

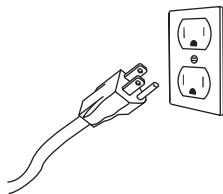


Cook Pizza Chart:

Code	Food Weight	Cooking Time
A-6	6oz	1:00
	11oz	1:30
	16oz(1LB)	2:00

CLEANING AND CARE

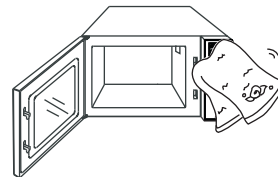
- Turn off the oven and unplug the power cord from the wall when cleaning.



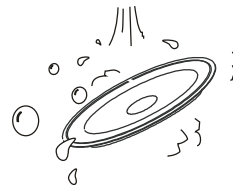
- Keep the inside of the oven clean. When food splatters or spilled liquids adhere to oven walls, wipe with a damp cloth. Mild detergents may be used if the oven gets very dirty. Avoid using spray or other harsh cleaners. They may stain, streak or dull the door surface.



- The outside of the oven should be cleaned with a damp cloth. To prevent damage to the operating parts inside the oven, water should not be allowed to seep into the ventilation openings.
- Wipe the door and window on both sides, the door seals and adjacent parts frequently with a damp cloth to remove any spills or splatters. Do not use abrasive cleaner.
- Do not allow the control panel to become wet. Clean with a soft, damp cloth. When cleaning the control panel, leave oven door open to prevent oven from accidentally turning on.



- If steam accumulates inside or around the outside of the oven door, wipe with a soft cloth. This may occur when the microwave oven is operated under high humidity condition. And it is normal.
- It is occasionally necessary to remove the glass tray for cleaning. Wash the tray in warm sudsy water or in a dishwasher.



- If the light bulb burns out, please contact customer service to have it replaced.
- The oven should be cleaned regularly and any food deposits should be removed. Failure to maintain the oven in a clean condition could lead to deterioration of surface that could adversely affect the life of the unit and could possibly result in a hazardous situation.
- Please do not dispose of this appliance into the domestic rubbish bin; it should be disposed to the particular disposal center provided by the municipalities.

PRODUCT WARRANTY

This warranty applies to products sold by Galanz Americas in the U.S. This warranty is in lieu of any other warranty and expressly applies to the individual product only.

Galanz product is warranted for one year following purchase for defects in material and workmanship. **Please save your receipt as proof of purchase is required to make a warranty claim.** During this period, we will provide the purchase cost of this product, a replacement or the equivalent, or repair per our discretion.

The warranty cannot be transferred through resale, including the resale through a 3rd party unauthorized retailer and is only bestowed up on the original consumer purchaser upon purchase from an authorized retailer.

■ **This warranty does not cover and excludes damage or defects caused by:**

- Consumer misuse
- Abuse
- Neglect including the failure to clean and/or provide adequate regular maintenance as outlined in the user manual
- Commercial use
- Subjecting the product to any voltage outside the specified range
- Loss of parts
 - The affixing of any attachments not provided with the product
- Accident
- Use in a manner not intended and outlined in the user manual.

■ Any subsequent damages caused by the above listed exclusions will not be covered and any claims determined to meet the above exclusions will be denied. All liability is limited to the purchase price and does not include any:

- Retail offered extended warranties
- Tax
- Other charges (including postage to send required materials)
- Incidental and/or consequential damages associated with the product in question.

Every implied warranty, including any statutory warranty of merchantability or fitness for a particular purpose is disclaimed except to the extent prohibited by law, in which case such warranty is limited to the duration of this written warranty. This warranty gives you specific legal rights. You may have other legal rights that vary depending on where you live. Some states do not allow limitations on implied warranties or special, incidental, or consequential damaged, so the above limitations may not apply to you.

If you have a claim under this warranty, please call our Customer Service number: 800-562-0738.

For faster service, please have the model number, serial number, and receipt ready for the operator to assist you.

WARRANTY REGISTRATION

Please mail this warranty card to the address below within 30 days of purchase.
Or you can register your product on line by going to www.galanz.com/us.

Galanz Americas, 55 Challenger Road, Suite 503, Ridgefield Park, NJ 07660

PLEASE PRINT CLEARLY.

Name _____

Address _____

City _____ State _____ ZIP _____

Phone _____ Email _____

Model Number _____ Serial Number _____

Purchase Location _____

You must attach a copy of your purchase receipt to validate your registration.

Galanz

©2021 Galanz Americas Limited Company

年份改动见措施单